

Figure 7  
ENVIRONMENTAL FEATURES



**BERTIE COUNTY**  
CTP Analysis and Information  
**Inset**  
**Bertie County**

Primary Environmental Features Legend

- Colleges & Universities
- School - Public
- School - Private
- 24K Hydro
  - Artificial Path
  - Stream/River
- Airport Boundaries
- Flood Hazard Area
- Biodiversity Wildlife Habitat Assessment
  - (Maximum) 9 - 10
  - 8 7 6 5 2 - 4 1 0 (Moderate)
  - (Unrated)
  - Impervious Surface > 20%



0 1 2 4 6 8 Miles

Base map date: October 02, 2019

**Legal Disclaimer**

This product contains mapping data for informational and planning purposes only, and is subject to change. Users should review or consult the primary data sources to ascertain the usability of the information.

**WORKING COPY**  
Plan Date: February 05, 2025



Figure 7  
ENVIRONMENTAL FEATURES



**BERTIE COUNTY**  
CTP Analysis and Information  
**Inset 1**  
**Roxobel**

Primary Environmental Features Legend

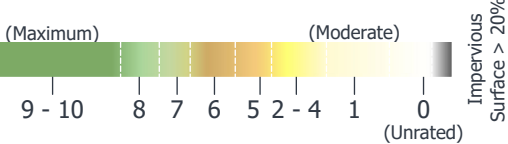
- Colleges & Universities
- School - Public
- School - Private

24K Hydro

- Artificial Path
- Stream/River

- Airport Boundaries
- Flood Hazard Area

Biodiversity Wildlife Habitat Assessment



Base map date: October 02, 2019

**Legal Disclaimer**

This product contains mapping data for informational and planning purposes only, and is subject to change. Users should review or consult the primary data sources to ascertain the usability of the information.

**WORKING COPY**  
Plan Date: February 05, 2025



Figure 7  
ENVIRONMENTAL FEATURES



BERTIE COUNTY  
CTP Analysis and Information  
Inset 2  
Kelford

Primary Environmental Features Legend

- Colleges & Universities
- School - Public
- School - Private

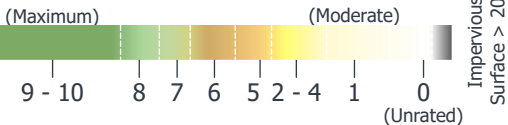
24K Hydro

- Artificial Path
- Stream/River

Airport Boundaries

- Flood Hazard Area

Biodiversity Wildlife Habitat Assessment



Base map date: October 02, 2019

Legal Disclaimer

This product contains mapping data for informational and planning purposes only, and is subject to change. Users should review or consult the primary data sources to ascertain the usability of the information.

WORKING COPY  
Plan Date: February 05, 2025



Figure 7  
ENVIRONMENTAL FEATURES



**BERTIE COUNTY**  
CTP Analysis and Information  
**Inset 3**  
**Lewiston Woodville**

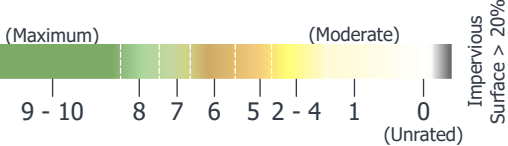
Primary Environmental Features Legend

- Colleges & Universities
- School - Public
- School - Private

24K Hydro

- Artificial Path
- Stream/River
- Airport Boundaries
- Flood Hazard Area

Biodiversity Wildlife Habitat Assessment



Base map date: October 02, 2019

**Legal Disclaimer**

This product contains mapping data for informational and planning purposes only, and is subject to change. Users should review or consult the primary data sources to ascertain the usability of the information.

**WORKING COPY**  
Plan Date: February 05, 2025



Figure 7  
ENVIRONMENTAL FEATURES



**BERTIE COUNTY**  
CTP Analysis and Information  
**Inset 4**  
**Aulander**

Primary Environmental Features Legend

- Colleges & Universities
- School - Public
- School - Private

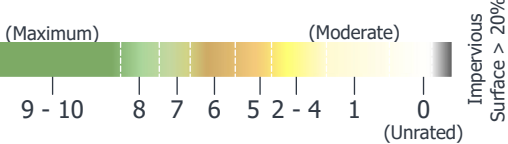
24K Hydro

- Artificial Path
- Stream/River

Airport Boundaries

- Flood Hazard Area

Biodiversity Wildlife Habitat Assessment



Base map date: October 02, 2019

**Legal Disclaimer**

This product contains mapping data for informational and planning purposes only, and is subject to change. Users should review or consult the primary data sources to ascertain the usability of the information.

**WORKING COPY**  
Plan Date: February 05, 2025



Figure 7  
ENVIRONMENTAL FEATURES



**BERTIE COUNTY**  
CTP Analysis and Information  
**Inset 5**  
**Powellsville**

Primary Environmental Features Legend

- Colleges & Universities
- School - Public
- School - Private

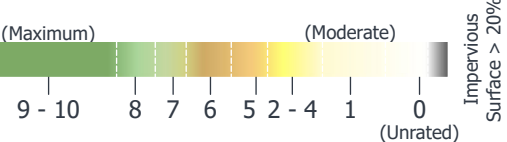
24K Hydro

- Artificial Path
- Stream/River

Airport Boundaries

- Flood Hazard Area

Biodiversity Wildlife Habitat Assessment



Base map date: October 02, 2019

**Legal Disclaimer**

This product contains mapping data for informational and planning purposes only, and is subject to change. Users should review or consult the primary data sources to ascertain the usability of the information.

**WORKING COPY**  
Plan Date: February 05, 2025



Figure 7  
ENVIRONMENTAL FEATURES



**BERTIE COUNTY**  
CTP Analysis and Information  
**Inset 6**  
**Askewville**

Primary Environmental Features Legend

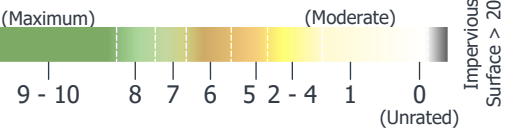
- Colleges & Universities
- School - Public
- School - Private

24K Hydro

- Artificial Path
- Stream/River

- Airport Boundaries
- Flood Hazard Area

Biodiversity Wildlife Habitat Assessment



Base map date: October 02, 2019

**Legal Disclaimer**

This product contains mapping data for informational and planning purposes only, and is subject to change. Users should review or consult the primary data sources to ascertain the usability of the information.

**WORKING COPY**  
Plan Date: February 05, 2025

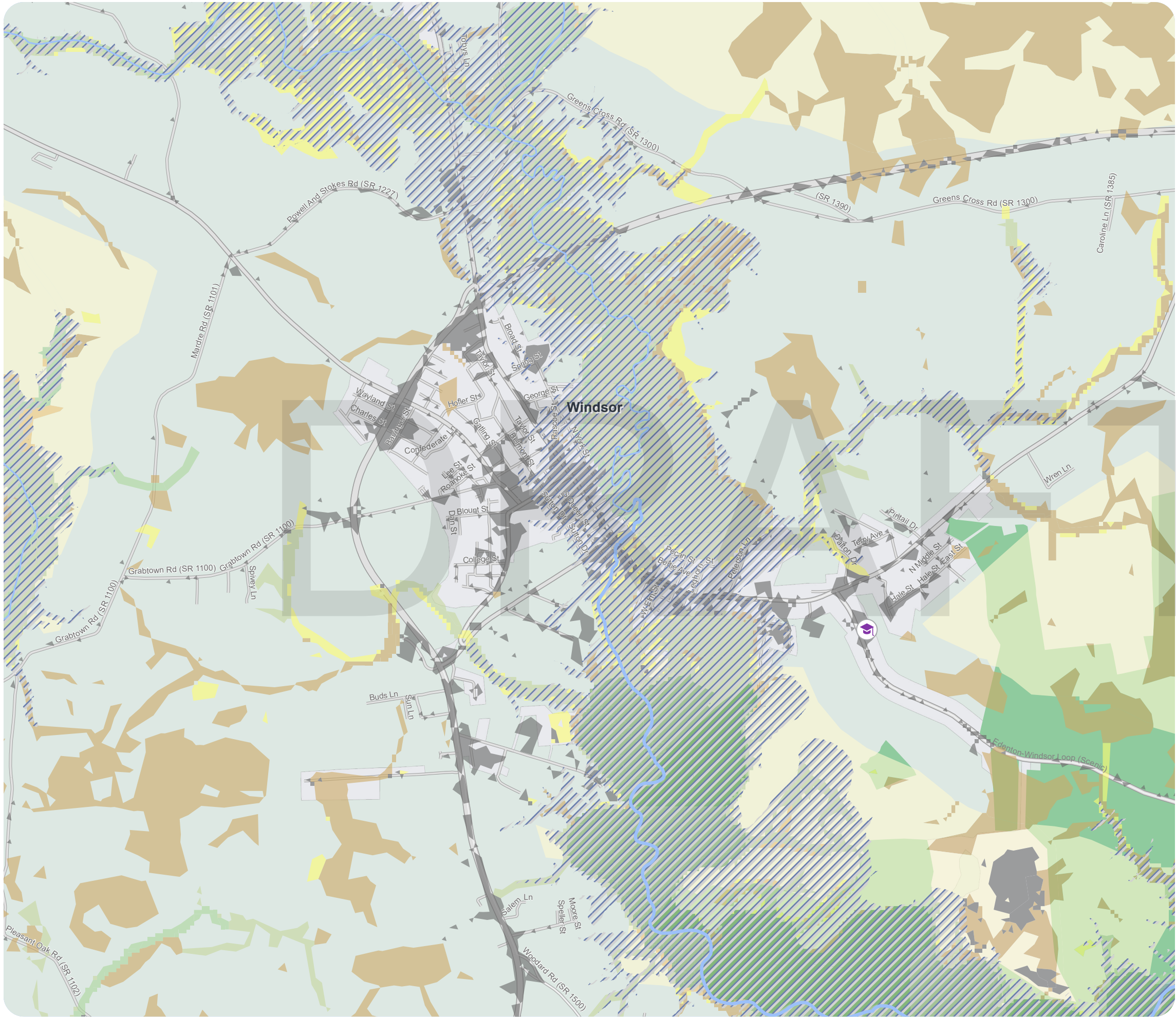


Figure 7  
ENVIRONMENTAL FEATURES



BERTIE COUNTY  
CTP Analysis and Information  
Inset 7  
Windsor

Primary Environmental Features Legend

- Colleges & Universities
- School - Public
- School - Private
- 24K Hydro
  - Artificial Path
  - Stream/River
- Airport Boundaries
- Flood Hazard Area
- Biodiversity Wildlife Habitat Assessment
  - (Maximum) 9 - 10
  - 8
  - 7
  - 6
  - 5
  - 2
  - 4
  - 1
  - 0 (Unrated)
  - (Moderate)
  - Impervious Surface > 20%



0 0.13 0.25 0.5 0.75 1 Miles



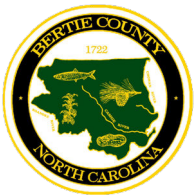
Base map date: October 02, 2019  
Legal Disclaimer

This product contains mapping data for informational and planning purposes only, and is subject to change. Users should review or consult the primary data sources to ascertain the usability of the information.

WORKING COPY  
Plan Date: February 05, 2025



Figure 7  
ENVIRONMENTAL FEATURES



**BERTIE COUNTY**  
CTP Analysis and Information  
**Inset 8**  
**Colerain**

Primary Environmental Features Legend

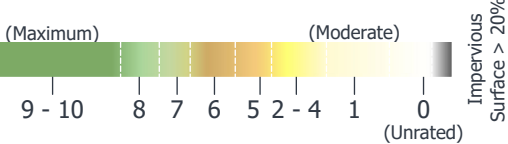
- Colleges & Universities
- School - Public
- School - Private

24K Hydro

- Artificial Path
- Stream/River

- Airport Boundaries
- Flood Hazard Area

Biodiversity Wildlife Habitat Assessment



Base map date: October 02, 2019

**Legal Disclaimer**

This product contains mapping data for informational and planning purposes only, and is subject to change. Users should review or consult the primary data sources to ascertain the usability of the information.

**WORKING COPY**  
Plan Date: February 05, 2025